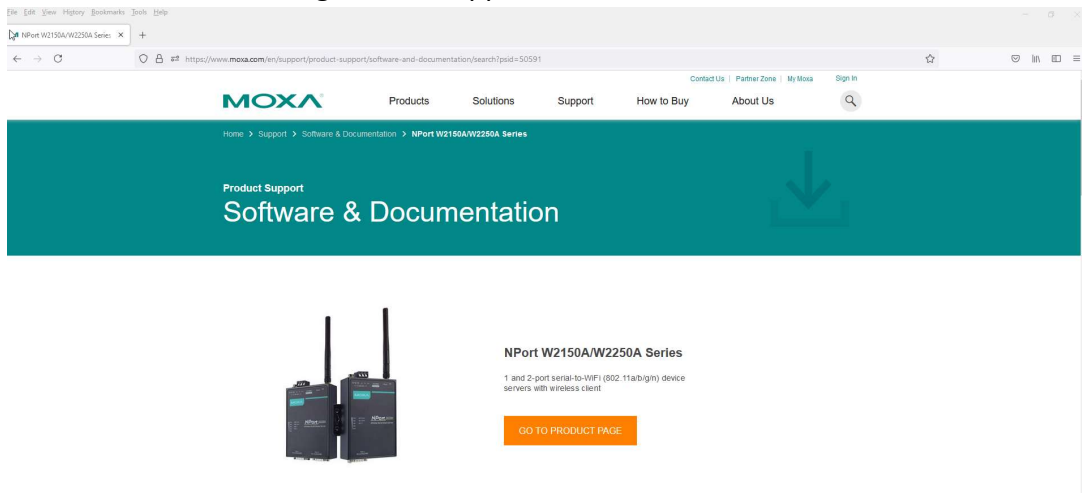


# Setup Nport Windows Driver Manager for Moxa Units with DNCPro

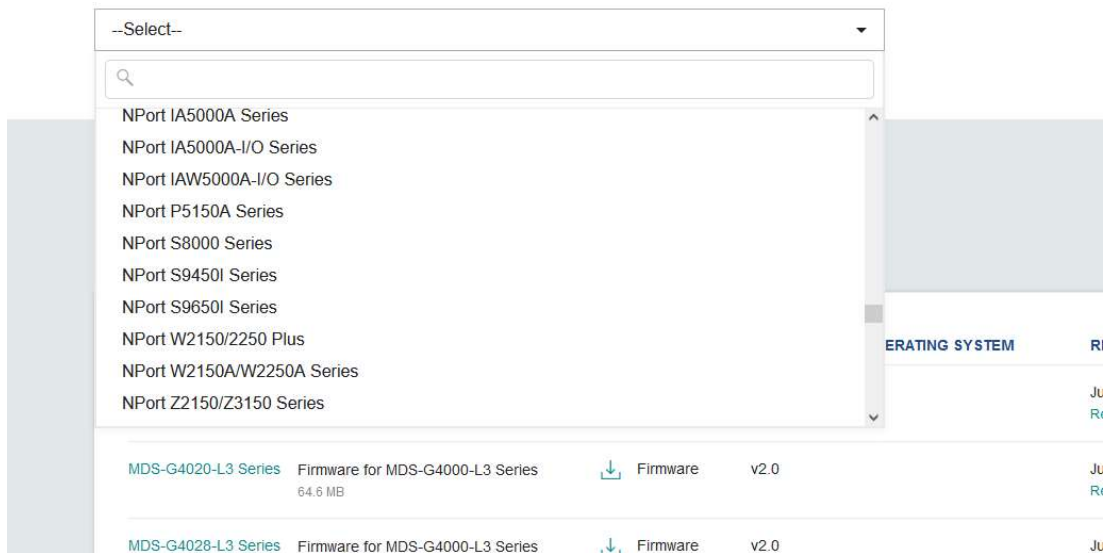
**\*\*NOTE:** If you have Nport Driver Manager already downloaded from Moxa skip this step and go to step 5\*\*

1. Go to [www.Moxa.com](http://www.Moxa.com), go under support and select software and documentation.



2. Select the model of Moxa you are using in the drop-down tab.

## Select a Product Series



3. Select **Drivers** and scroll down and download the windows driver manager in the drop-down menu.

FILTER Operating System  All **Driver(11)** Firmware(2) Software Package(3) Utility(2)

NAME	TYPE	VERSION	OPERATING SYSTEM	RELEASE DATE
Serial Device Server Driver for macOS (macOS 10.12 to 10.15) 492.2 KB	Driver	v1.0	- macOS 10.12 - macOS 10.13 - macOS 10.14 <a href="#">Show More</a>	Jul 08, 2020 <a href="#">Release notes</a>
Windows Driver Manager (for Windows 7, Server 2008, or later) 3.0 MB	Driver	v3.2	- Windows 10 - Windows 7 - Windows 8 <a href="#">Show More</a>	Jul 06, 2020 <a href="#">Release notes</a>
Real TTY drivers for Linux 2.x.x 92.2 KB	Driver	v2.0	- Linux Kernel 2.4.x - Linux Kernel 2.6.x	Oct 24, 2019 <a href="#">Release notes</a>
Real TTY drivers for Linux 3.x.x 95.0 KB	Driver	v3.0	- Linux Kernel 3.x	Oct 24, 2019 <a href="#">Release notes</a>
Real TTY drivers for Linux 4.x.x 95.4 KB	Driver	v4.0	- Linux Kernel 4.x	Oct 24, 2019 <a href="#">Release notes</a>
Real TTY drivers for Linux 5.x.x 95.3 KB	Driver	v5.0	- Linux Kernel 5.x	Oct 24, 2019 <a href="#">Release notes</a>
Windows Driver Manager 2.6 MB	Driver	v2.0	- Windows 2000 - Windows 95 - Windows 98 <a href="#">Show More</a>	Aug 22, 2018 <a href="#">Release notes</a>

4. Run the downloaded file. This will setup Nport Windows Driver Manager. This can be installed on a client PC or where DNCPro is installed.
5. Open Nport Windows Driver Manager.
6. Upon opening, select the **add** button. This will pull up another screen.
7. Select **input manually** and type in the IP address that you assigned to the Moxa in the IP address bar.

Add NPort

Mapping IPv6 COM Port

Search Select All Clear All

No	Model	MAC 1	Address 1	MAC 2	Address 2

Input Manually

Real COM | Redundant COM | Reverse Real COM

NPort IP Address

Enable Auto IP Report

MAC Address

First Mapping Port

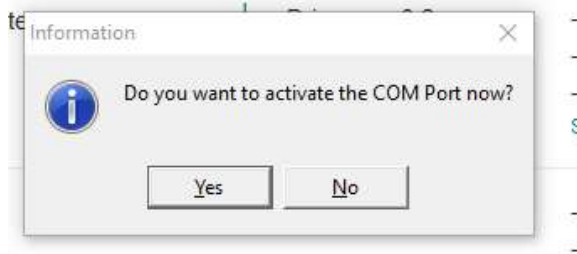
Data Port

Command Port

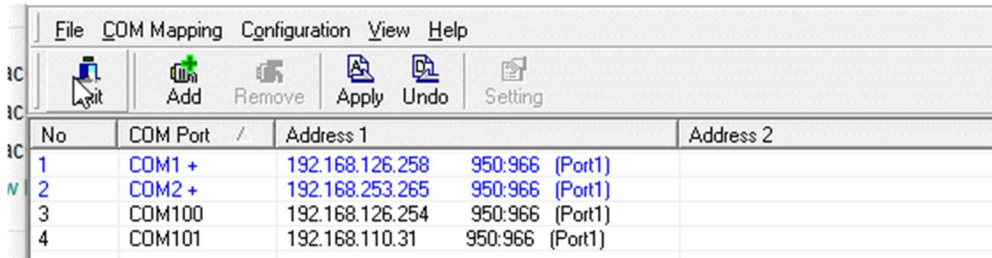
Total Ports

Help OK Cancel

8. Select OK. It will ask you if you want to set the COM port; select no.



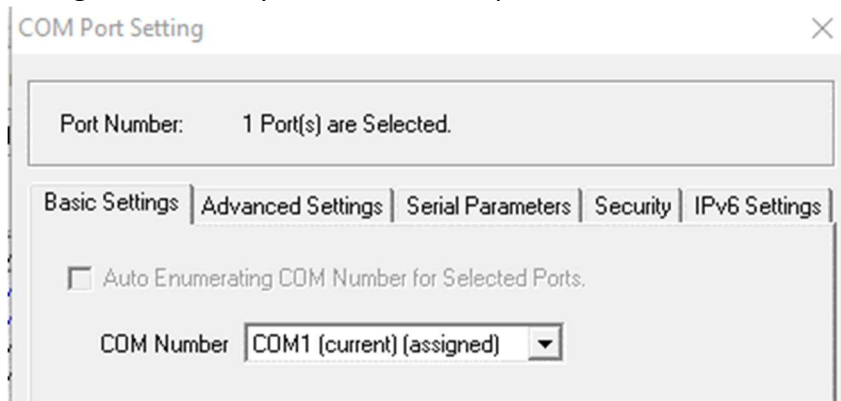
9. The new Moxa unit should show up as blue. Double-click on it.



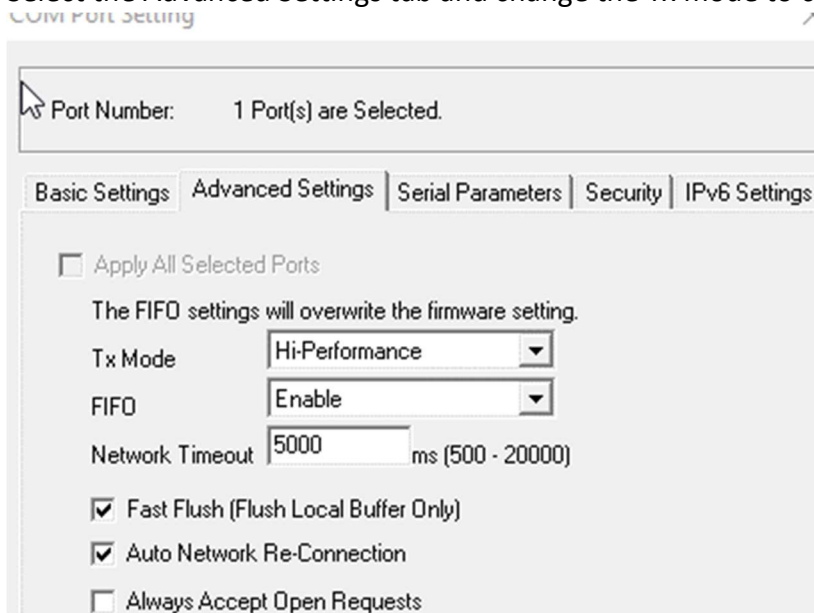
A screenshot of a software interface showing a table of COM ports and addresses. The table has columns for "No", "COM Port", "Address 1", "Address 2", and "Address 3". The rows are numbered 1 to 4. The "COM Port" column contains "COM1 +", "COM2 +", "COM100", and "COM101". The "Address 1" column contains "192.168.126.258", "192.168.253.265", "192.168.126.254", and "192.168.110.31". The "Address 2" column contains "950.966 (Port1)", "950.966 (Port1)", "950.966 (Port1)", and "950.966 (Port1)". The "Address 3" column is empty.

No	COM Port	Address 1	Address 2	Address 3
1	COM1 +	192.168.126.258	950.966 (Port1)	
2	COM2 +	192.168.253.265	950.966 (Port1)	
3	COM100	192.168.126.254	950.966 (Port1)	
4	COM101	192.168.110.31	950.966 (Port1)	

10. Assign a COM port that is not being used already. Alternatively, if the machine is in configurator already, select the COM port from there.

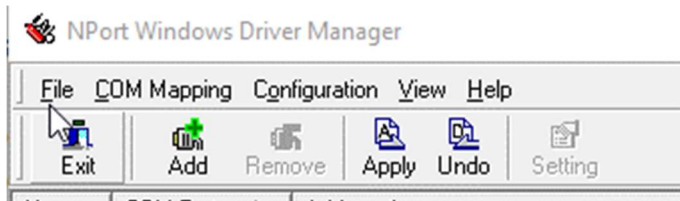


11. Select the Advanced Settings tab and change the Tx mode to classical.

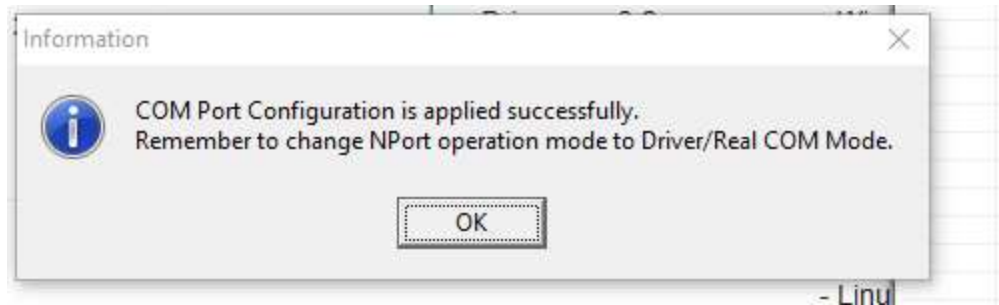


12. Change the FIFO to **disabled** and uncheck **fast flush**. Select OK.

13. Select **Apply** on the Nport Driver Manager homepage. This will take a couple of seconds and then it should say successfully added COM port.



14. Restart communicator and the machine should show up as idle now.



**If any issues, double check COM ports between Nport and configurator.**