

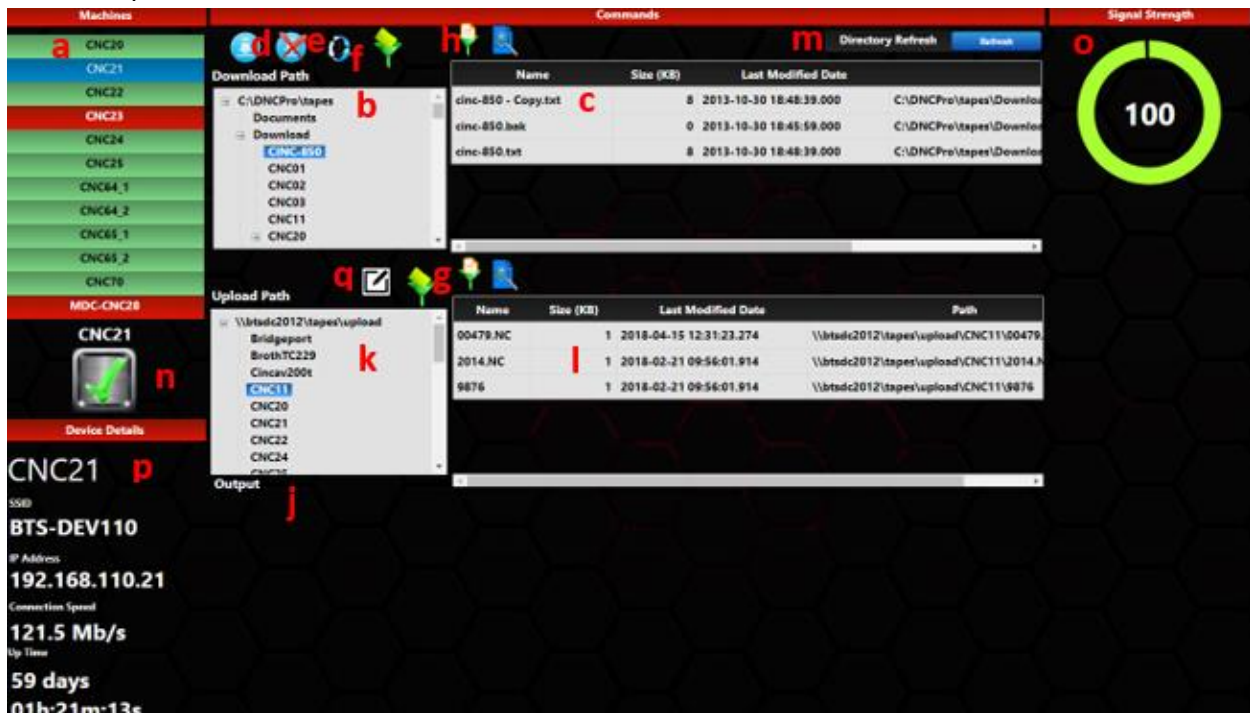
Progressive DNC 2020 Quick Start User Guide

Access and Login

1. From any local network PC or mobile device, open a web browser and go to http://<server_name>/Thingworx/FormLogin/ProgressiveDNC and login with appropriate credentials.
 - a. **PLEASE NOTE – Both User and Password are case sensitive**

Operator dashboard

1. After login, everyone will see the Operator dashboard as the first screen. This is the replacement for controller in DNC Professional V5 and V6



- a. **Machine List and status** – This area is where you select the CNC machine that you want to view as well as its online status. A green checkmark means the serial-to-ethernet device is online. On the far right of the screen, signal strength is shown for wireless devices.
- b. **Download Path** – Displays the hierarchy of a given download path and CNC machines. Selecting a machine allows you to view which files are available for download for each machine.

- c. **Download Area** – The middle section is where you select the path (left area of the section) and then the part file that you want to download. Once highlighted by clicking on the part program, hit the download button to transfer the part file to the CNC control via the serial-to-Ethernet hardware. This is the manual form of download and the machine must be in a read/ready state prior to hitting download. For upload, there is no need to interface with the hardware. The software is in a “listen” state all the time waiting for an upload command. Follow your standard CNC direct commands for both Upload and download when applicable. No user interface commands are needed for CNC direct download.

- d. **Download Button** – Once you have a machine selected have a file selected for download, simply hit the download button and the corresponding file will be downloaded to the specified machine.

- e. **Abort Download** – Use this button to abort a download that was selected.

- f. **Restart Process** – Restart the process for an individual machine.

- g. **Filter Directory** – Filter directories for easier navigation.

- h. **Filter Directory (Part File)** – Filter the directories for each part file.

- i. **View File** – View the contents of a file.

- j. **Output Logs**- Any manual download from the UI will display the part file contents that was sent to the serial-to-ethernet hardware.

- k. **Upload Path** – Upload Path is like Download Path in the sense that it displays the hierarchy of machines and their respective paths and projects.

- l. **Upload Area** – This area simply shows the files that were uploaded from a selected machine from within the system. This area is very similar to the Download Area in the sense that it shows the same fields as the Download Area (Name, Size, etc.)

- m. **Directory Refresh** – Refresh the directories for each machine by selecting the blue “Refresh” button.

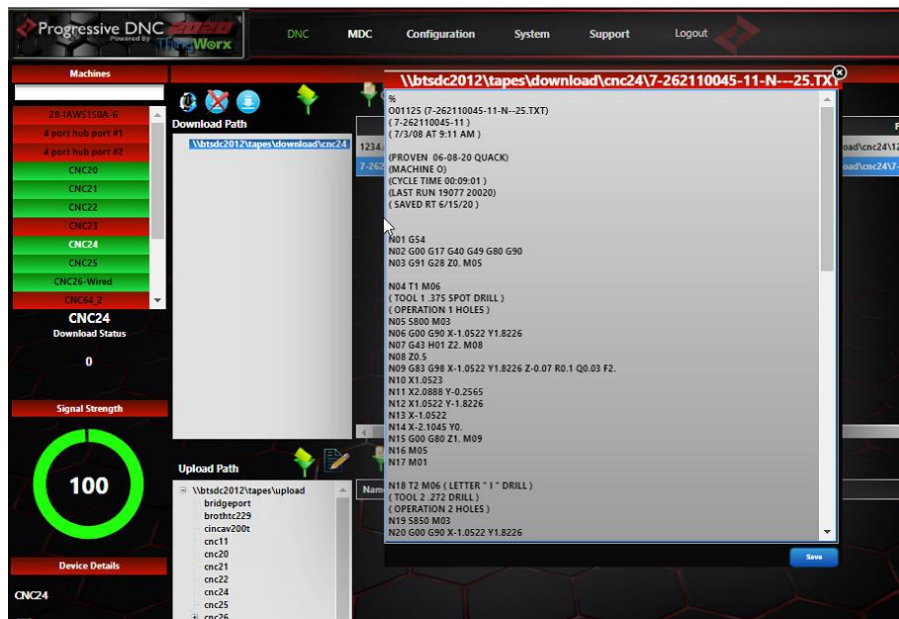
- n. **Status Icon** – Once a machine is selected in the Machine List, either a green check mark or a red 'X' will appear. A green check mark indicates that the Wireless is successfully connected and a red 'X' indicates that the wireless device is not online.
- o. **Signal Strength** – This area of the dashboard indicates the wireless signal strength, if your system is running wirelessly.
- p. **Device Details** – This area gives a basic overview of the machine you have selected in the Machine List. Some of the features in this area include SSID name, and IP address of the wireless device used to connect to that machine.
- q. **Rename File** – Rename a file that you have currently selected.

Using the Resequencing Edit Option

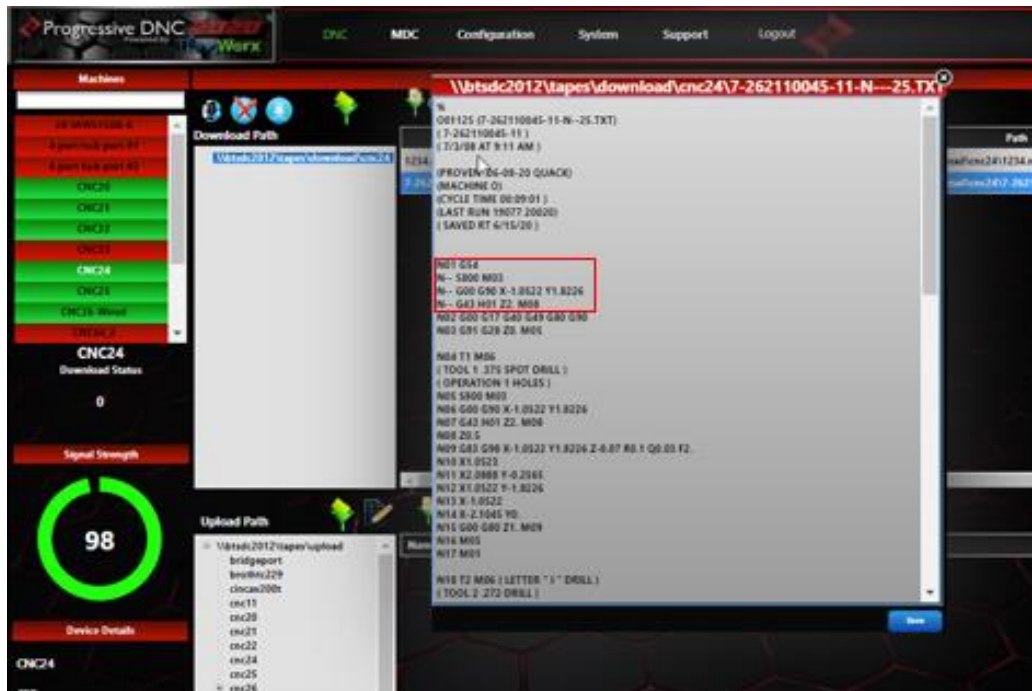
The following section is a guide to assist users and administrators through the resequencing edit option from within the Operator Dashboard. **Users must have permission to edit files.**

1. Adding lines to the program

- a. Select the desired machine, then double-click the desired part file.



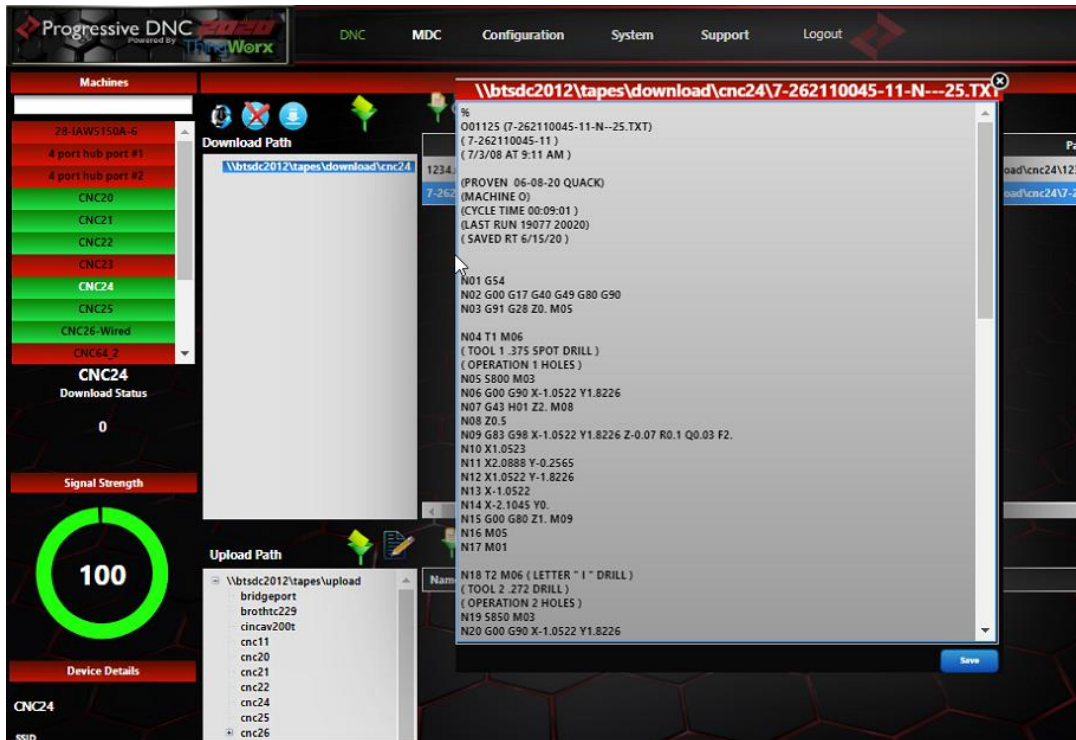
- b. Make the desired line changes. ****IMPORTANT**** When you add a line into the program you must start it with N-- or N-. If you do not put this in it will not resequencing the program.



- c. Hit save in the bottom right corner of the window and your program will be updated and will show the new lines renumbered all the way down.
d. To verify, re open the file and make sure the changes have taken effect.

2. Removing lines from a program

- a. Select the desired machine, then double-click the desired file



- b. Once the program is open, delete the unwanted lines out of the program and select Save in the lower right corner.
- c. To verify the changes have taken effect, close the file and re open it to ensure changes have been implemented.