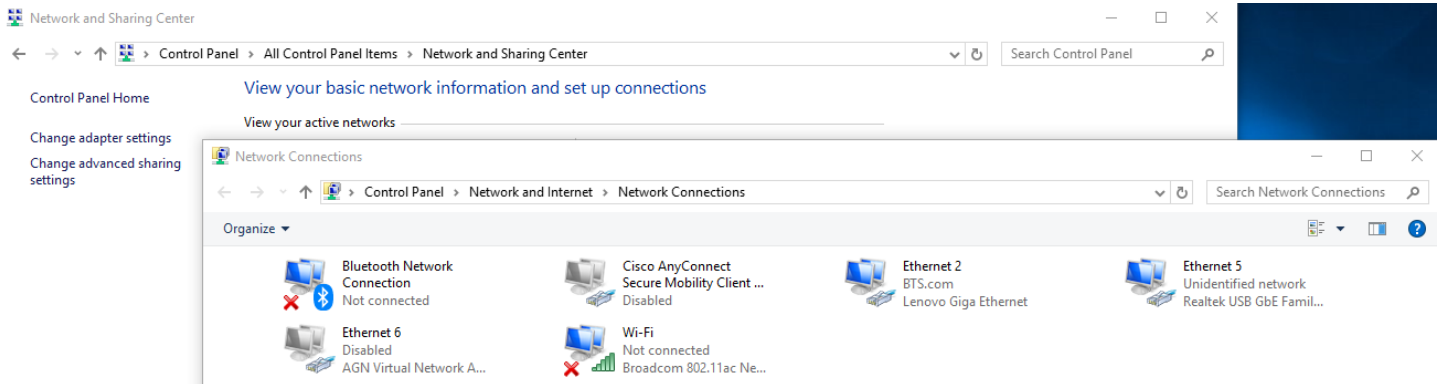
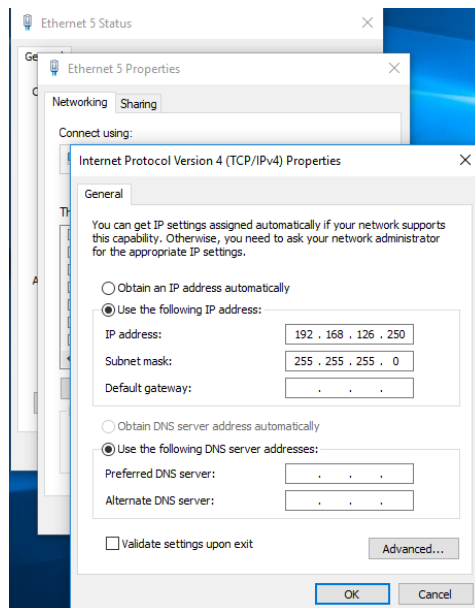


Moxa Quick Startup Guide

- 1) Using a **crossover cable**, connect your Moxa device to a computer
- 2) Plug your Moxa into a power source
****Note: Steps 1 and 2 MUST be done in this order****
- 3) Access Network and Sharing Center > Change Adapter Settings.



- 4) Find and select the ethernet port in which you will be connecting the Moxa to. Select Properties > Internet Protocol Version 4. Make sure that particular port is on the same subnet as the moxa unit (the default wired IP address is 192.168.126.254).



- 5) Login using the default no-password credentials. If the Moxa device was recently defaulted and does not login using the default credentials, use the password “moxa” to login.

Account

Password

- 6) On the left-hand side, navigate to System Management -> Maintenance -> Firmware Upgrade.



- 7) Navigate to the provided firmware file and submit and upload. The moxa should reboot after a couple of minutes.
- 8) Login to the Moxa using the same credentials as before.

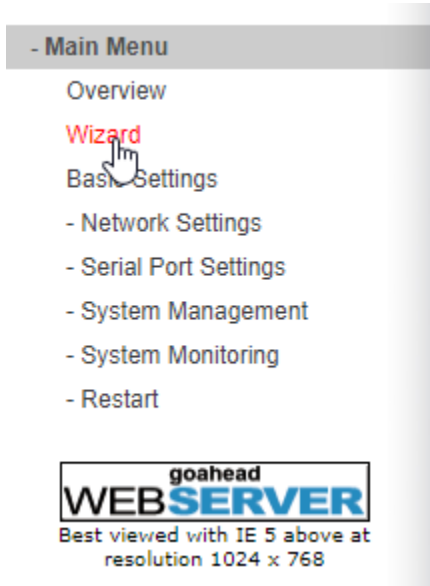
9) On the left-hand side, navigate to System Management -> Maintenance -> Load Factory Default.



10) On the next page, Select **Submit** to load factory default. If a pop-up prompts to confirm, Select **OK**. **Loading factory default is necessary as vital functions will not work without a factory default after firmware upgrade.**

11) When the Moxa boots up again, login using the same credentials as before.

12) Navigate to “Wizard” on the left-hand panel.



13) Move Onto the next page for Wizard navigation.

14) Skip to Page 7 for Non-Wizard navigation.

Setup Wizard

- 1) Configure the IP addressing of your Moxa according to how you want it in your system. Click Next.

Step 1/5

WLAN IP Configuration

IP configuration	Static ▼
IP address	192.168.127.254
Netmask	255.255.255.0
Gateway	

[Next](#)

Step 2/5

General Properties

Network type	Infrastructure Mode ▼
SSID	profile1

[Back](#) [Next](#)

- 3) Set the passcode authentication according to how it is setup in your system. Click Next.

Step 3/5

Security Properties

Authentication	WPA2-PSK ▼
Encryption	AES-CCMP ▼
PSK passphrase	

[Back](#) [Next](#)

- 4) Under Operation Modes, click on the drop-down and select TCP Server. The default values are OK, click Next.

Step 4/5

The settings will be applied to all serial ports.

Operation Mode

Operation mode	TCP Server ▼
TCP port	4001
Cmd port	966

[Back](#) [Next](#)

- 5) ****Optional**** Setup the parameters according to the machine the Moxa will be connected to. If you do not have this information at this point, simply click Next to accept the default Values.

Step 5/5

The settings will be applied to all serial ports.

Alias	Baud rate	Parity	Data bit	Stop bit	Flow control	FIFO	Interface
<input type="text"/>	115200	None	8	1	RTS/CTS	Enable	RS-232

- 6) Review your settings to make sure they are accurate and click Submit.

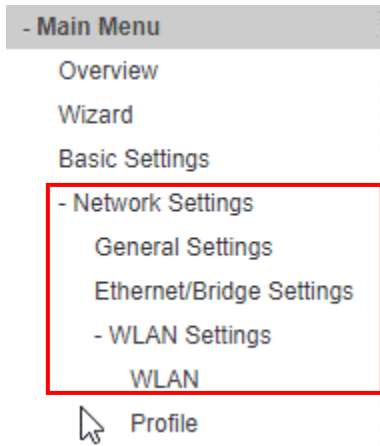
Finish Settings

Your changes have not been saved. Please check that your settings in the following and click "Submit" for the updates to take effect or click "Back" to modify it.

WLAN IP Configuration	
IP configuration	static
IP address	192.168.127.254
Netmask	255.255.255.0
General Properties	
Network type	Infrastructure Mode
SSID	profile1
Security Properties	
Authentication	Open System
Encryption	Disable
Operation Mode	
Port 1	
Operation mode	TCP Server
TCP port	4001
Cmd port	966
Serial Parameters	
Baud rate	115200
Parity	None
Data bit	8
Stop bit	1
Flow contro	RTS/CTS
FIFO	Enable
Interface	RS-232

Non-Wizard Navigation

- 1) If after the setup wizard you wish to change the wireless settings, navigate to Network Settings
→ WLAN Settings.



- 1a) Select WLAN to access the IP Addressing section and configure accordingly.

WLAN Settings

WLAN Settings

IP configuration

IP address

Netmask

Gateway

- 1b) Select Profile to access settings regarding Connecting to the network. Navigate to general to reconfigure the SSID and navigate to Security to reconfigure network security.

Wireless LAN Profile Settings

Wireless LAN Profile

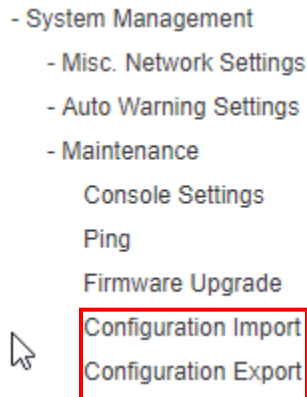
Network type

Profile name

Import/Export

If you wish to export a configuration from one Moxa and Import it into another Moxa, refer to the following steps.

- 1) On the left-hand panel, navigate to System Management → Maintenance.



- 2) To export a Moxa's configuration, Select Configuration Export then select Export. A text file will save to the computer.

❖ Configuration Export

Configuration Export

Export

- 3) If you wish to import another Moxa's settings into the current Moxa, select Configuration Import. Browse to the file you wish to import and determine if you want to include IP configurations with the import. Select Import.

❖ Configuration Import

Configuration Import

Select configuration file

IP configuration

Choose File NPortW2x50A (2).txt

Import all configurations including IP configurations.

Submit