

Some readers see this part of your email after the subject line in the inbox.
Write something brief and catchy, compelling them to open the email.



Progressive DNC is here!!

BTS/CIMNET teamed up with Thingworx to deliver a next generation DNC upgrade on their industry leading IoT (Internet of Things) platform.

[Click here to view more information](#)

The screenshot shows a web-based interface for Moxa Commands. On the left, there is a tree view of a file system with folders like 'Project 201', 'Project 202', and 'download'. The main area displays a table of files with columns for Name, Size, LastModifiedDate, DownloadLink, and Path. Below the table is an 'Output Log' section showing system boot logs. On the right side, there is a 'Moxa Status' section with a circular signal strength gauge showing 82% and a status of 'Online'. Below the gauge, system information is listed: Active Profile Name (BTS LAB), Channel (5.0), SSID (BTS-LAB-WIFI), IP Address (192.168.107.20), Connection Speed (65 Mb/s), and Up Time (0 days 21h:41m).

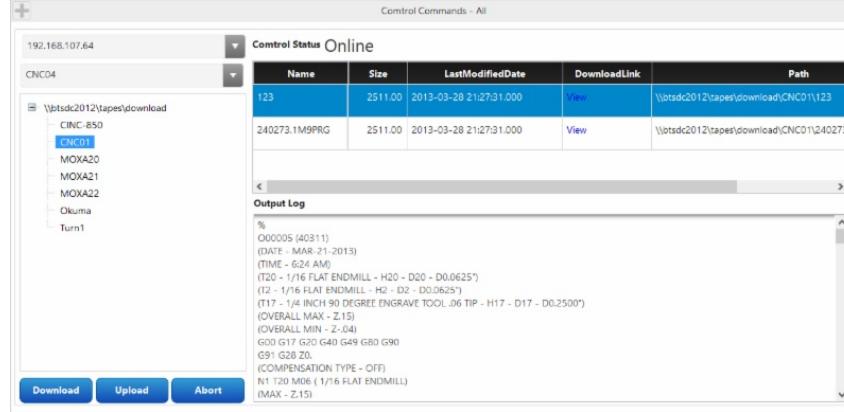
Name	Size	LastModifiedDate	DownloadLink	Path
0576	2511.000	2013-03-28 21:07:21.000	View	\\moxa201\2\appes\download\FMCKA21\FMCKA21
240275.1M99C	2511.000	2013-03-28 21:07:21.000	View	\\moxa201\2\appes\download\FMCKA21\FMCKA21
240275.1M99C	2511.000	2013-03-28 21:07:21.000	View	\\moxa201\2\appes\download\FMCKA21\FMCKA21
240275.1M99C	2511.000	2013-03-28 21:07:21.000	View	\\moxa201\2\appes\download\FMCKA21\FMCKA21

```
%
C:\WINDOWS\system32\cmd.exe
(PN) 3-3381-4, BRASING SPANURE)
(DHELP MD)
(DPB, 10, LFC-01, WSC-15)
NOXG0319107-25413M15
NO1299046M04
NO15G00
NO2011000M09
(IGH TURN & FACE)
NO25G00K7.22-358311000
NO30G01K7.625E015
```

New Features

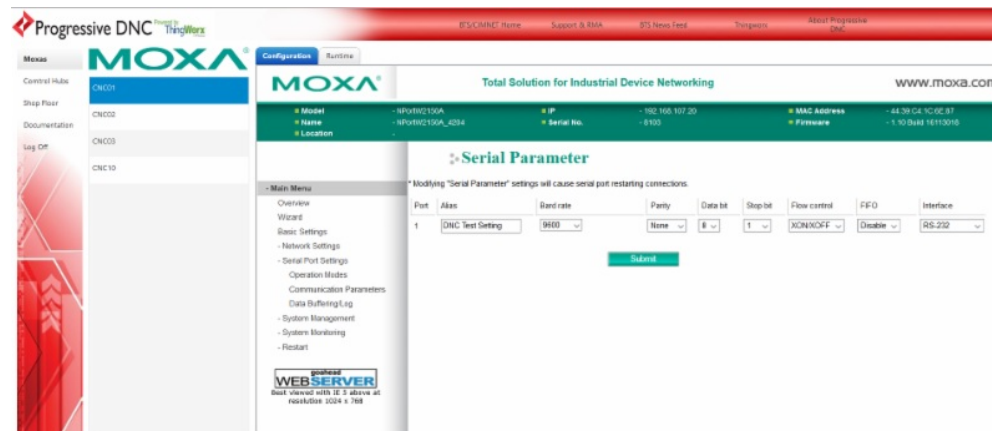
- Web based
- Active Directory Integration
- Custom user/group interfaces
- Mobile compatibility (Android/Apple IOS)
- Secured wired/wireless communication
- Moxa integration
- View real time status on a 2d or 3d shop floor layout
- Virtual machine compatibility
- SMS and SMTP notifications
- Direct access to BTS support
- SSL encryption

This platform leads to various machine reading activities



System Requirements

- Windows server 2008 R2 or newer (Enterprise), Windows 7 x64 or newer (SMB)
- Latest release of Microsoft Edge, Google Chrome, MAC-OS, Safari, or Mozilla Firefox
- 8GB or more available RAM
- Intel core i5 equivalent or greater
- 1 or more gigabyte Ethernet adapters
- 100 GB or more of available hard drive space
- Secure and reliable network infrastructure
- Secure and reliable 802.11 G/N/AC wireless infrastructure (if applicable)
- Domain access recommended
- SAN/RAID - reliable and appropriate level for performance (if applicable)
- .NET 4.5.2



Contact US:

Sales - 610 927 6707 x102
Email for Sales

Support - 610 927 6707 x107
Email for Support